



energywise
Powered By Lapolla

Guaranteed Energy Savings Building Solutions

ENERGY SAVINGS FOR LIFE

Guaranteed...



AirTight
SPRAY FOAM INSULATION MFG. BY LAPOLLA



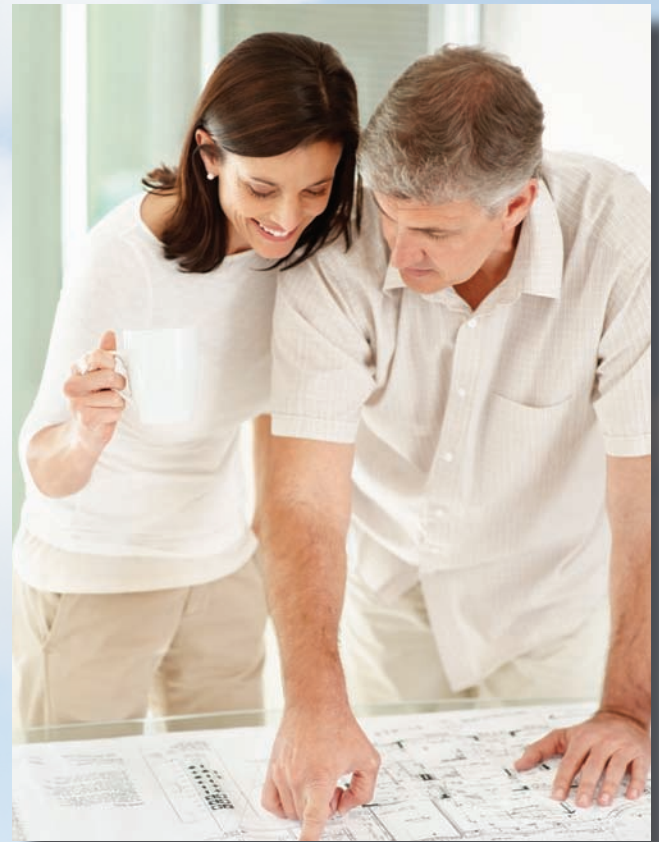
There is No Better Way to Build

"Green building" is a red-hot phenomenon. Type the term into any web search engine, and the result will be millions of corresponding links. While it is wonderful to have all of

this pertinent information at our fingertips, it also creates a significant challenge for the typical new home-owner to use these resources in determining the best way to build a new home. After all, there is only one opportunity to build a new home correctly, and no one wants to later regret the decisions that went into making the largest purchase they will ever make.

EnergyWise: A NASA Spinoff Company with a Total Systems Approach

As a NASA spinoff company, EnergyWise has become synonymous with quality, integrity and reliability. We're one of the nation's leading thermal engineering firms. Our mission is to provide an ultra energy-efficient, healthy home package that performs so well it makes other energy efficiency programs and current building code requirements pale in comparison.



"In our new 3,400 square foot EnergyWise home, the HVAC usage after one year was only 5,710 KWH. At 7¢ per KWH, this amounts to \$400 or \$33.31 per month."



Guaranteed Results

When correctly implemented, our proven technology and engineering system yield guaranteed results* that are unparalleled in the industry. This is confirmed by thousands of successfully engineered and monitored construction projects.

* For more on the EnergyWise guarantee, visit www.energywisestructures.com.

** Fee for review and stamp by Dr. Busby.



How We Achieve Ultra Energy Efficiency

The EnergyWise holistic approach leaves nothing to chance. It ensures that each home will perform optimally, every time. It is a complete turnkey system that eliminates uncertainty and simplifies the construction process for everyone involved – especially the homeowner.



AirTight foam seals the nooks and crannies where dust and pollen can enter the home, creating a much healthier living environment for families that suffer with hay fever and other allergies. AirTight foam also helps prevent condensation, which is key in averting mold growth.

Once applied, our foam forms the foundation of a virtually airtight thermal envelope. Plus, AirTight foam is one of the safest and most environmentally friendly insulation products available.

Bottom Line Benefits

Not only is an EnergyWise home ultra energy efficient and good for the environment, it will also save you money, provide a far more comfortable living space with less dust, and is ultimately worth more than the typically built home.

Your home will be engineered to maintain under 50% relative humidity while the HVAC system is running, thus providing our "Healthy Home Advantage" (even dust mites and mold cannot survive and grow at that humidity level).

Finally, your high performance home will also play a significant role in reducing our nation's need for foreign oil.

Step 1: EnergyWise Ultra Energy Efficient, Healthy Engineering

Our proprietary space age engineering software and mechanical layout services correctly size and engineer each mechanical system for proper air distribution, thus preventing problems such as improperly sized units, moisture issues, temperature disparity, etc... All engineered duct layouts are reviewed and stamped by Dr. Michael R. Busby, our Chief of Engineering, an MIT Graduate, PhD, PE and former NASA Rocket Scientist, to ensure optimal performance.

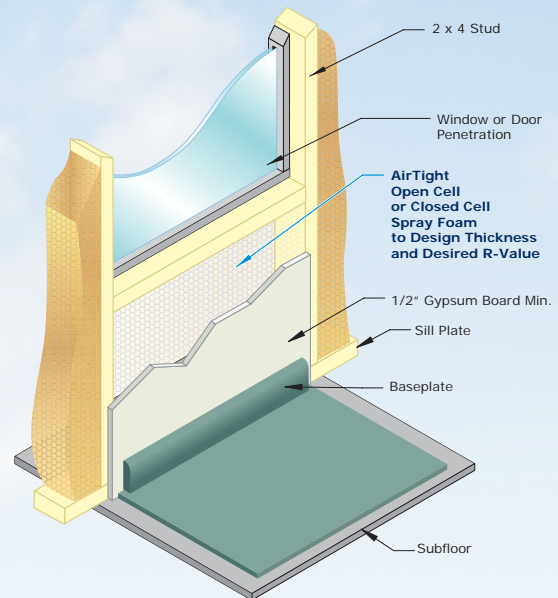
* The results are guaranteed as well!*

Step 2: AirTight Spray Foam Insulation

Our high performance polyurethane spray foam (open cell or closed cell) is applied by installation professionals who are approved applicators. The foam is applied to exterior walls and roofs as a heated liquid which then quickly expands, completely filling every open space. It cures within seconds providing a thermal, sound and condensation barrier in a single application without seams or gaps. Our closed cell foam substantially adds to the structural integrity of the home providing additional protection during inclement weather.

A Tight Thermal Envelope That Means Year-Round Comfort for Your Family

In a typical home, up to 50% of conditioned air is lost from gaps thus resulting in excessive heating and cooling bills. The seamless AirTight spray foam insulation system performs proficiently, dramatically reducing air leaks which results in a consistently comfortable home.



AirTight Spray Foam Insulation:

- Offers a high insulation R-value
- Controls moisture
- Provides a seamless air barrier
- Adds strength to the structure (closed cell)
- Minimizes sound transmission
- Promotes better indoor air quality
- Does not shrink or settle

Positive Cash Flow From Day One

It Really Doesn't Cost More To Build An Ultra Energy Efficient, Healthy Home With EnergyWise Engineering and Spray Foam!

When monthly HVAC utility savings are compared against the added cost of building an EnergyWise home, you'll actually be in positive cash flow from day one.

Actual example using AirTight Spray Foam Insulation with the EnergyWise High Performance, Healthy Home Engineering System

3,246 sq. ft. House; Dallas, Texas; Facing West

*Engineered by EnergyWise Structure's proprietary software and specifications. For additional fee, EnergyWise can stamp drawings regarding the HVAC duct design, etc.

Building Envelope	Dallas house built using typical fiberglass insulation	Dallas house built using the AirTight foam system
Insulation		
Roof (attic)	R-38	6" AirTight .5-lb. Foam
Roof (cathedral)	R-30	5" AirTight .5-lb. Foam
Exterior Walls (2"x4")	R-13	3" AirTight .5-lb. Foam
Exterior Walls (2"x6")	R-19	5" AirTight .5-lb. Foam
Underfloor areas	R-30	5" AirTight .5-lb. Foam
Low Air Infiltration	No	Yes
Glazing		
Windows (double-hung, vinyl, low-e, with argon gas)	U-0.33	U-0.33
Doors		
French Doors (fixed glass, low-e, with argon gas)	U-0.33	U-0.33
Solid Core Doors	Foam Filled	Foam Filled
Heating and Cooling		
Furnace (AFUE)	0.80	0.80
A/C-Heat Pump (SEER)	13	13
Ductwork Located in Conditioned Space	No	Yes
Engineering		
ACCA Manual J Designed	No	Yes
Room-by-Room load calculations	No	Yes
Insulated by Certified Contractors	No	Yes
Energy Guarantee	No	Yes
Environmentally Friendly Insulation	No	Yes
Professionally Engineered HVAC System	No	Yes

Monthly Utility Cost Comparison:

Projected Monthly Energy Consumption

(Conventional Construction)	\$ 295.00
EnergyWise "Guaranteed" Not to Exceed.....	- 104.00
Net Monthly Utility Savings.....	\$ 191.00

Monthly Savings After EnergyWise Costs:

Estimated Additional Foam Construction Cost.....	\$ 9,700.00
The Additional Monthly Construction Cost Amortized Over a 30-year Mortgage (\$9,700 x 7.5% over 30 years).....	67.00
Monthly Utility Savings	\$ 191.00
Less Additional Monthly Cost of Foam Construction.....	\$ - 67.00
Positive Monthly Cash Flow.....	\$ 124.00

EnergyWise Case Study



13,524 square foot Tennessee home with the HVAC designed by EnergyWise.

Monthly utility costs guaranteed not to exceed

\$166

For More Information on How to Get Started :



Guaranteed Energy Savings Building Solutions



Lapolla Industries, Inc.
1-888-4-LAPOLLA
www.AirTightInsulation.com